



SANCTUARY POINT

SANCTUARY COVE.

If you've ever imagined what life would be like living in a resort, then wonder no more. Here, a sense of calm seems to ripple throughout the community and everything seems to move at a gentler pace. The faces seem friendlier, events less formal and the leisure time activities more interesting.

No wonder you're going to want to call it home.



DISPLAY HOME

LOT 43 THE POINT CIRCUIT

Homecorp[®] CONSTRUCTIONS



ARTISTS IMPRESSION



SANCTUARY COVE.

One day is never enough

SANCTUARYCOVE.COM 07 5577 6500 GPEREZ-ARCEO@MULPHA.COM.AU

SANCTUARY COVE SALES CENTRE // Jabiru House, Masthead Way, Sanctuary Cove
Open Monday to Friday 8.30am - 5pm and Saturday & Sunday 10am - 4pm // Take exit 57 off the M1

▲ A MULPHA COMPANY

SANCTUARYCOVE.COM | 07 5577 6500
GPEREZ-ARCEO@MULPHA.COM.AU | 0457 702 802

SPECIFICATIONS & INCLUSIONS

EXTERIOR DETAILING

- Rendered masonry walls
- Lightweight cladding
- Undercover outdoor patio and porch
- Aluminium windows with insect screens to operable windows
- Feature driveways
- Quality landscaping to front & rear yards
- Instantaneous hot water system
- Clothes line
- Tilt-up masonry fence to side & rear boundaries
- TV antenna
- Remote controlled garage doors
- Swimming pool to rear yard with glass fencing

BATHROOM / ENSUITE

- Full height wall tiling
- Semi-frameless shower screens
- Quality chrome tapware
- Generous vanities & storage

INTERIORS

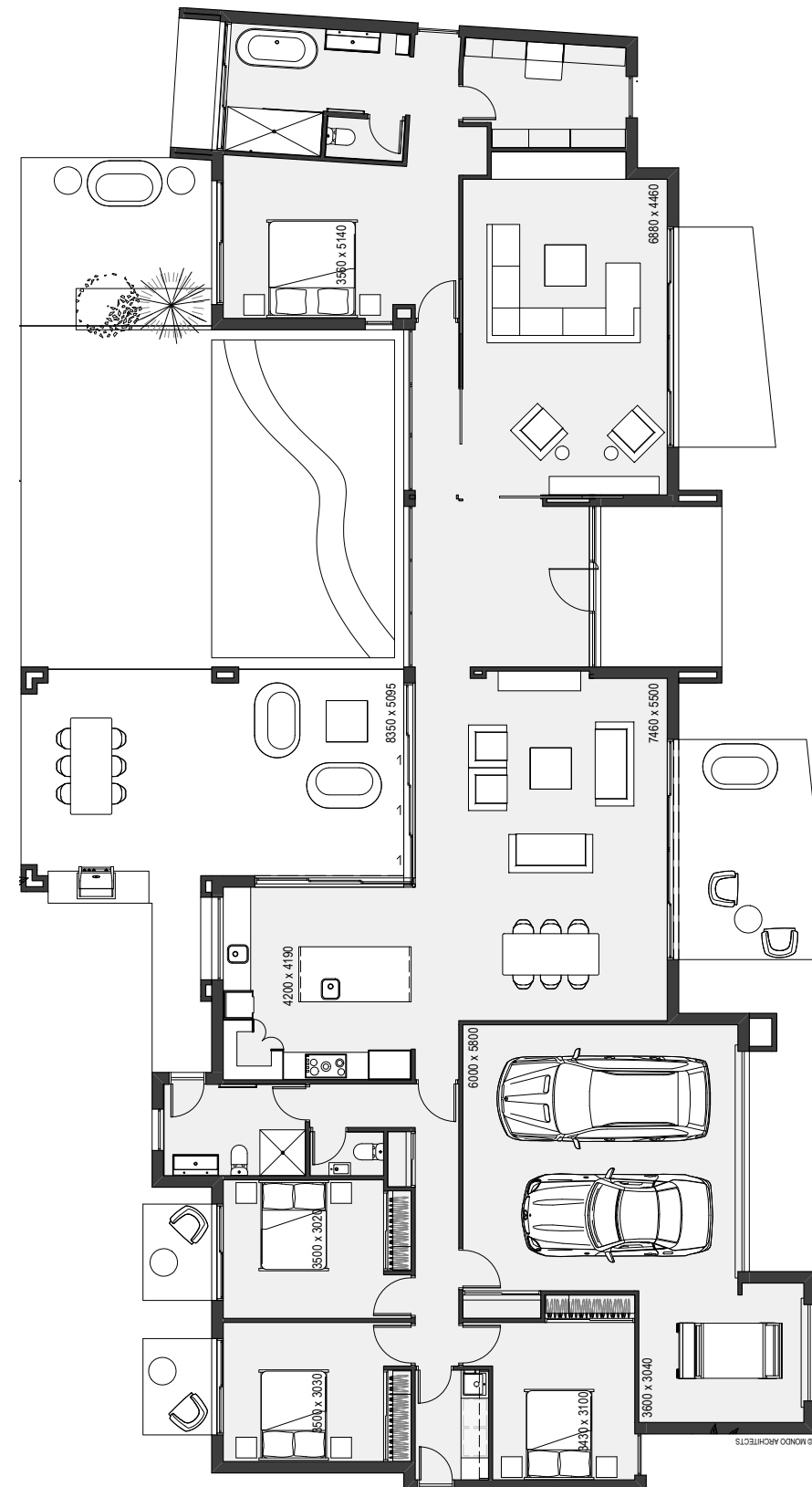
- Generous ceiling heights (minimum 2.7m to living rooms)
- Large format floor tiles to living rooms
- Stone slabs to all kitchen & bathroom benchtops
- Quality carpet to all bedrooms
- Reverse cycle ducted air conditioning
- Insulation to ceiling and walls
- LED downlights to living rooms
- Ceiling fans to all bedrooms
- Built in wardrobes to all bedrooms
- Ample storage

KITCHEN

- Tiled splashback
- 60cm oven
- Gas cooktop
- 60cm fully integrated dishwasher
- Externally ducted rangehood
- Undermount sink
- Outdoor built in BBQ

FLOOR PLANS

			
4	2	2	2.5



INTERNAL LIVING
288m²

EXTERNAL LIVING
81m²

TOTAL 369m²

LAND SIZE 782m²



DISCLAIMER: Please note that whilst every care is taken to ensure the contents of this brochure are correct, this information is to be used as a guide only. Purchasers need to rely on their own enquirers and refer to contract of sale. Quay lines are subject to final approval.